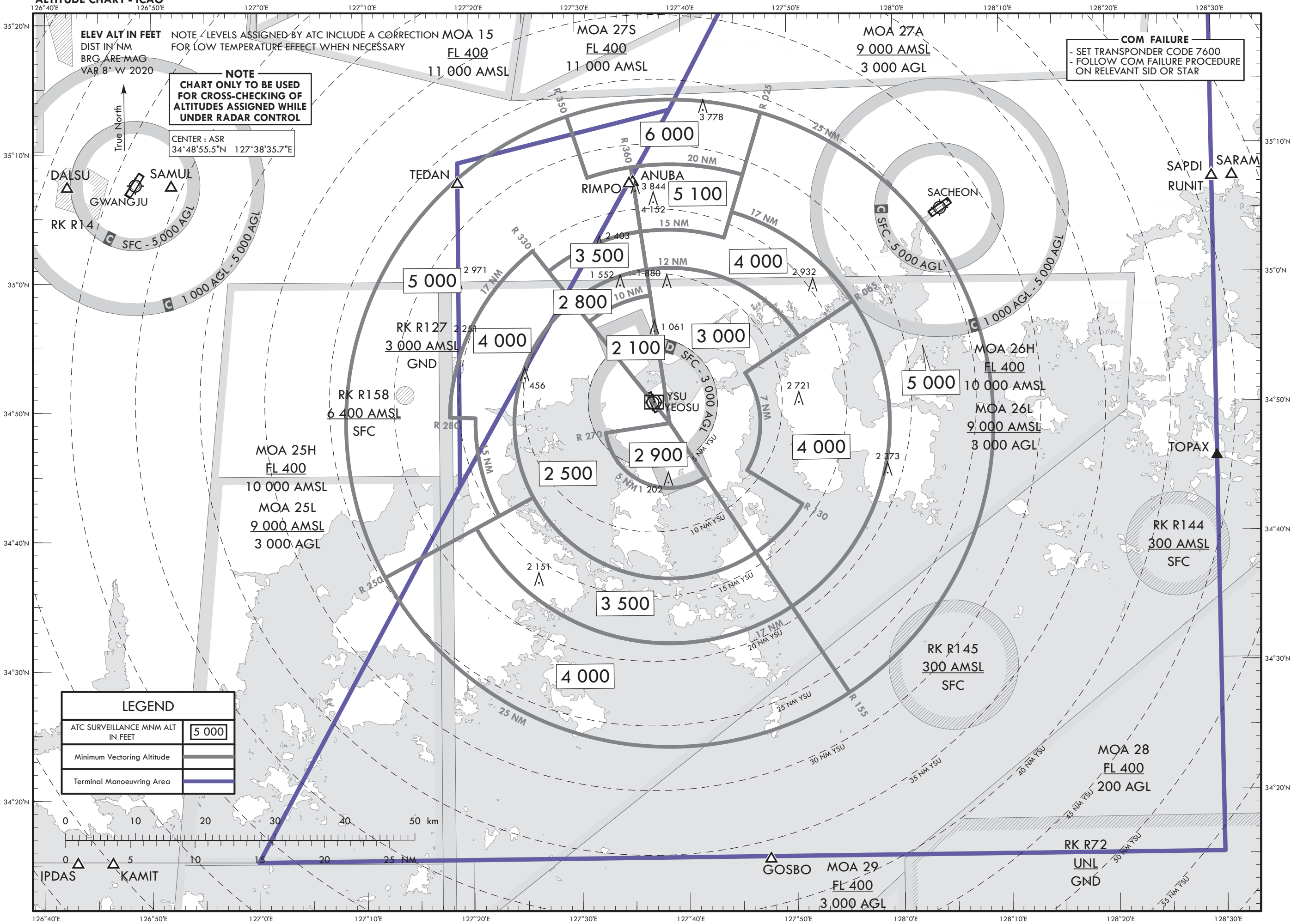


ATC SURVEILLANCE MINIMUM
ALTITUDE CHART - ICAO

AERODROME ELEV 53 ft
TRANSITION ALT 14 000 ft
SACHEON APP 135.4 344.7
YEOSU ARR 119.725 317.425

TMA SACHEON



NOTE
CHART ONLY TO BE USED
FOR CROSS-CHECKING OF
ALTITUDES ASSIGNED WHILE
UNDER RADAR CONTROL

CENTER: ASR
34°48'55.5"N 127°38'35.7"E

LEGEND	
ATC SURVEILLANCE MNM ALT IN FEET	5 000
Minimum Vectoring Altitude	
Terminal Manoeuvring Area	

Change : New chart.